



# **GTX285 Fan Removal and Block Installation**

Danger Den, LLC. assumes no liability whatsoever, expressed or implied, for the use or installation of this product. These installation instructions are subject to change without notice.

# GTX2850 Video Card

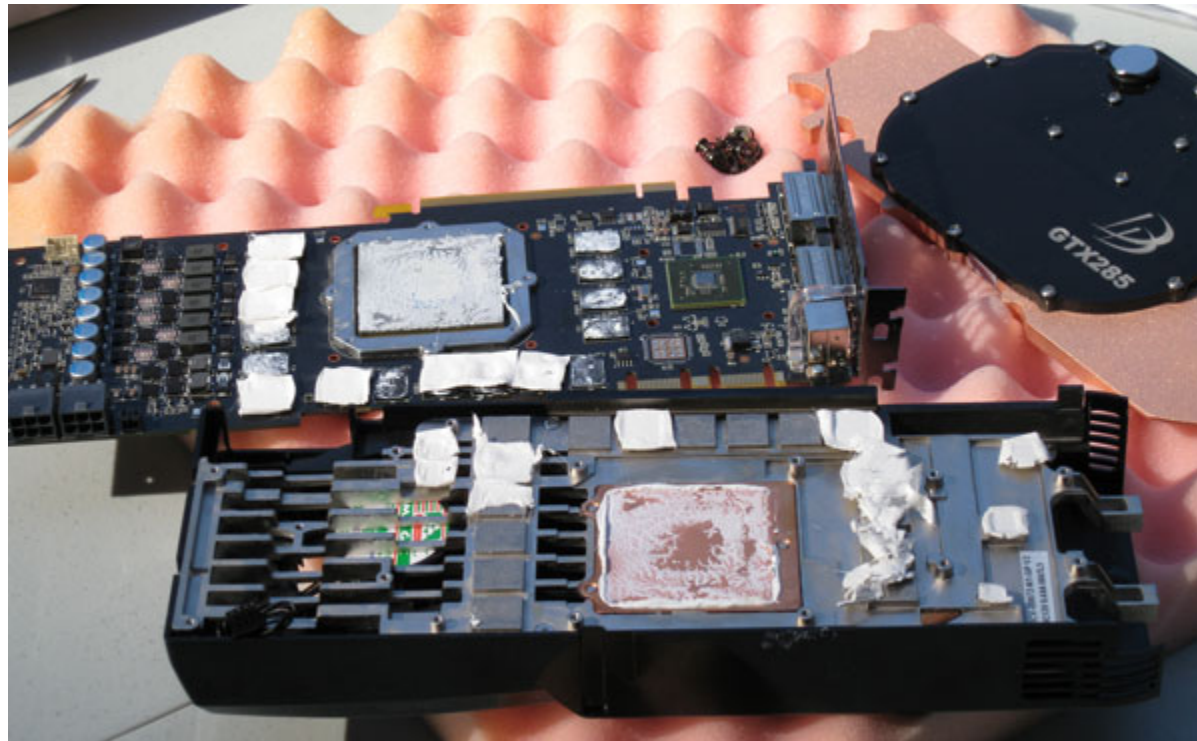
These images show the reference card and heatsink design. There are 10 screws to remove on the backside and two on the DVI cable bracket to remove.



Remove the 12 highlight screws:  
12 - Screws from the Backside  
2 - Screws on the DVI Bracket Side



Once all the screws are out, gently separate the backplate from the video card. This may require a bit of minor twisting to break the thermal tape adhesion. Remove the Fan Connector.



For Single Slot Brackets remove (1) screw connecting the bracket to the PCB and the (4) DVI hex standoff screws.

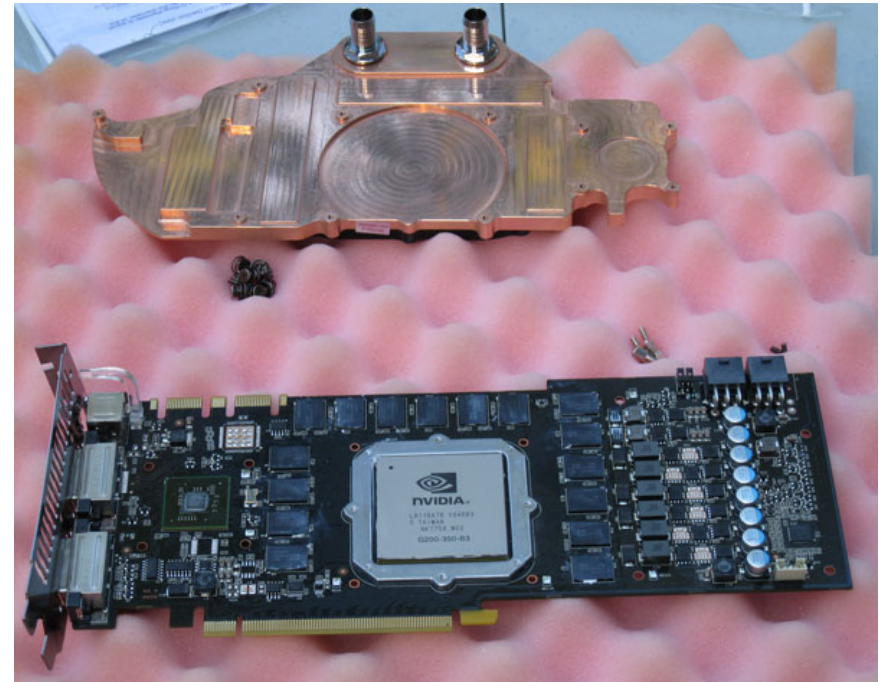
The LED light transmitter can be gently pulled out.



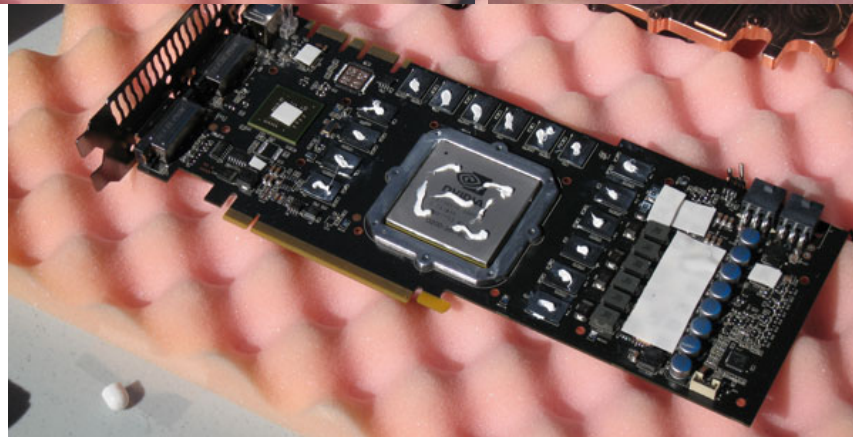
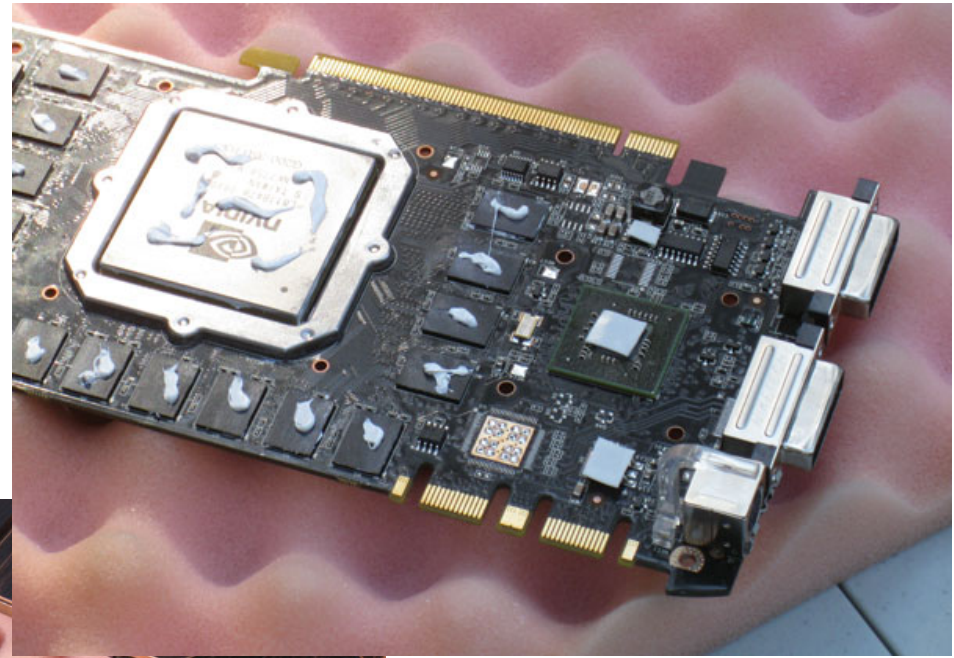
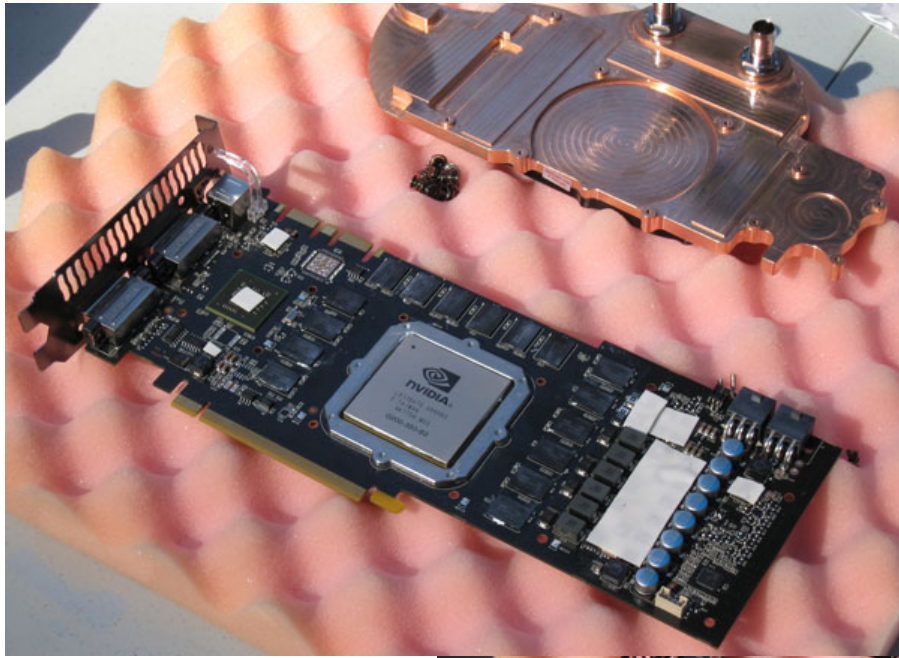
Save everything including thermal pads. Reassembling the heatsink and putting in a sealed bag is an easy way to keep the parts all together.



All of the components that will have a thermal pad or ceramique added, need to be cleaned. Using a product like the Arctic Cleaner can make this job much easier.

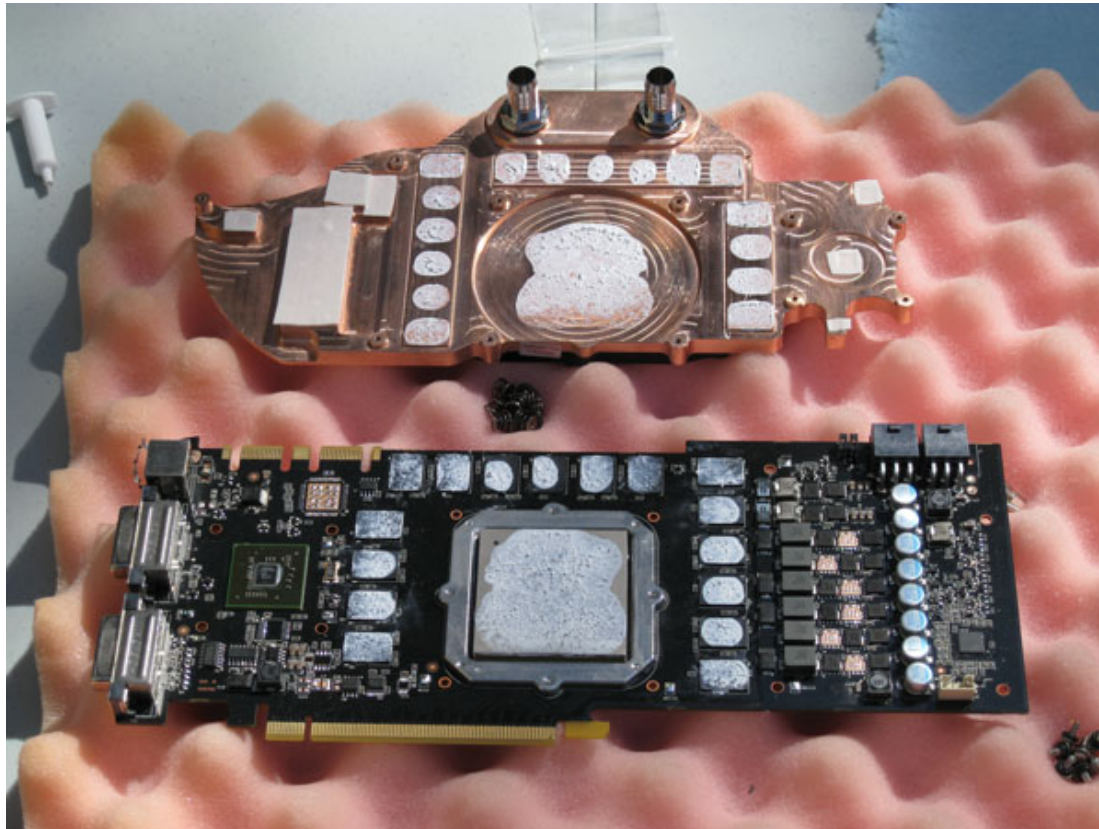


Apply the supplied thermal tape to all of the components shown in the instructions. The thermal pads will need to be cut to size and the clear protective cover removed from both sides. Add thermal paste as shown.



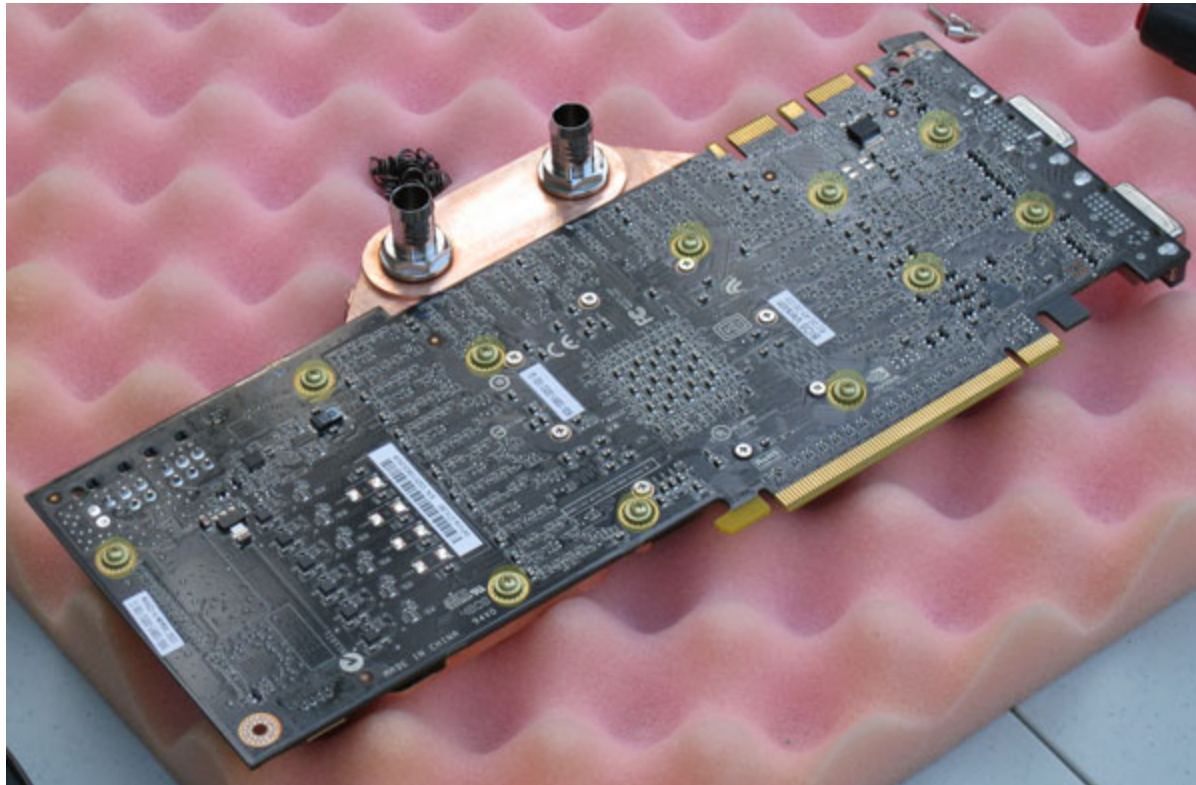
It is highly recommended to do a “fit test” to see how the block is making contact with the video card. The thermal paste spreads out and an impression should be seen of each component.

After the check, additional ceramique can be added or the block and card can be re-cleaned and the ceramique re-applied.

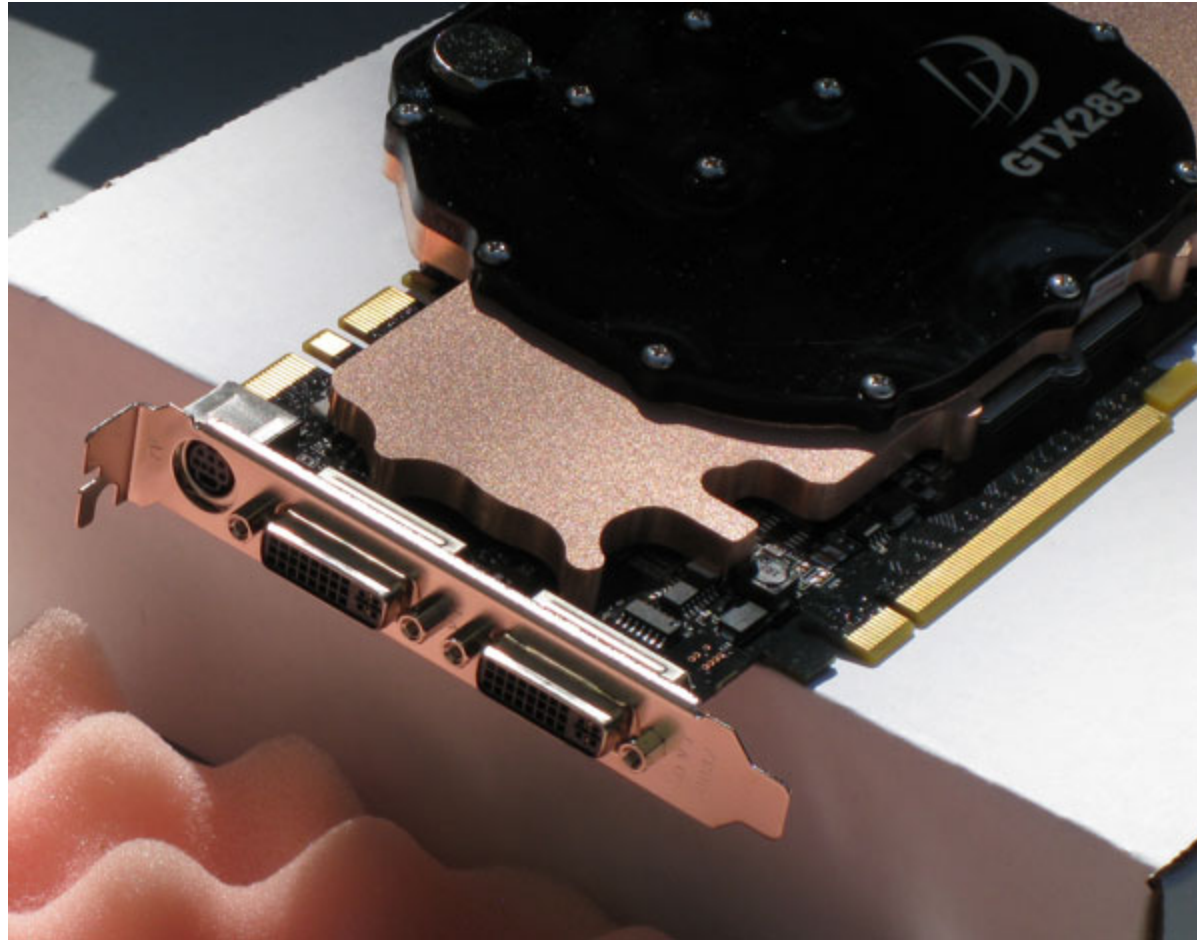


**\*NOTE\*** - a good rule of thumb is to push the PCB at the area of the GPU and RAM pads to verify there is no flexing of the PCB and improve contact

Start all of the screw assemblies in the proper locations. Then tighten down the (4) surrounding the GPU first. Then proceed with the remaining screws per the supplied instructions.



The single slot PCI bracket can be installed with the four hex bolts.  
Start all four bolts before completely tightening them down.



**Congratulations!! Overclock it and enjoy the FPS!!!**