



# **GTX295 Block Installation**

Danger Den, LLC. assumes no liability whatsoever, expressed or implied, for the use or installation of this product. These installation instructions are subject to change without notice.

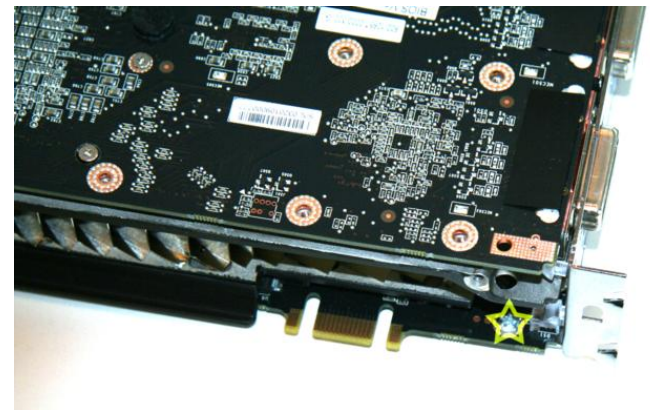
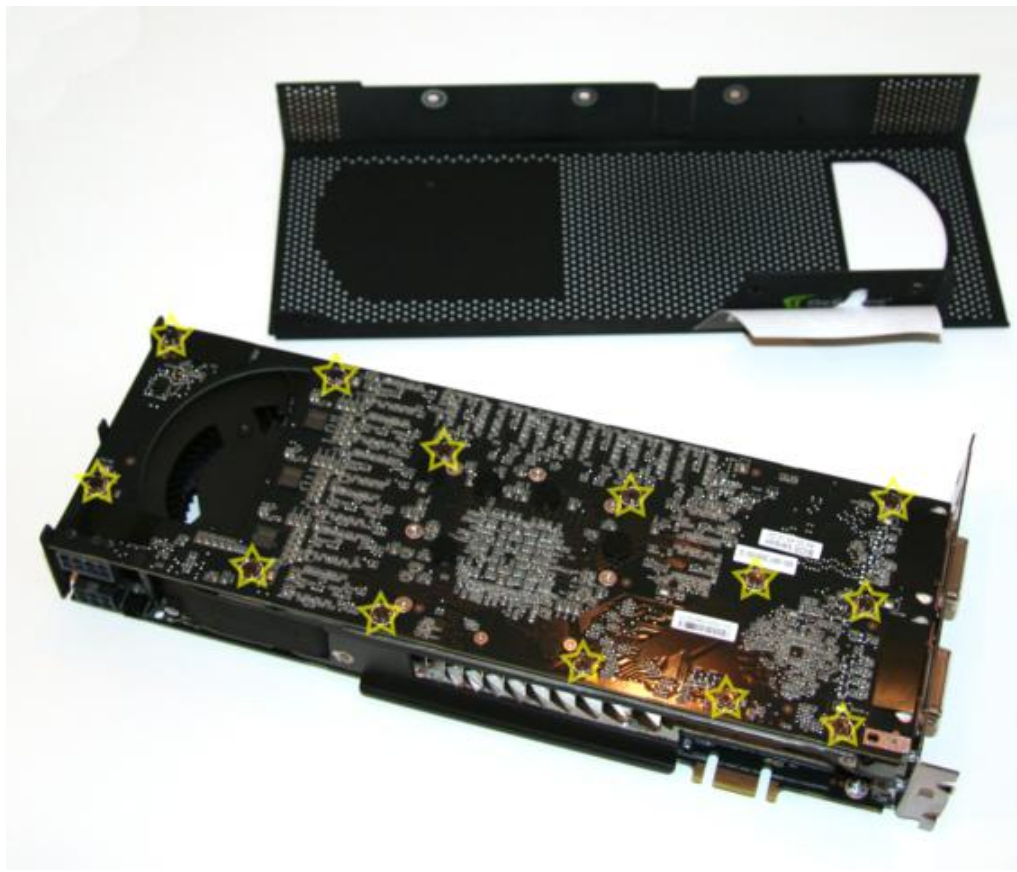
# GTX295 Video Card

Remove the (13) screws from the video card back side. Remove (2) screws and (4) DVI support posts from the bracket. Remove (3) screws from EACH side of the video card. Some of these may be covered by a label.



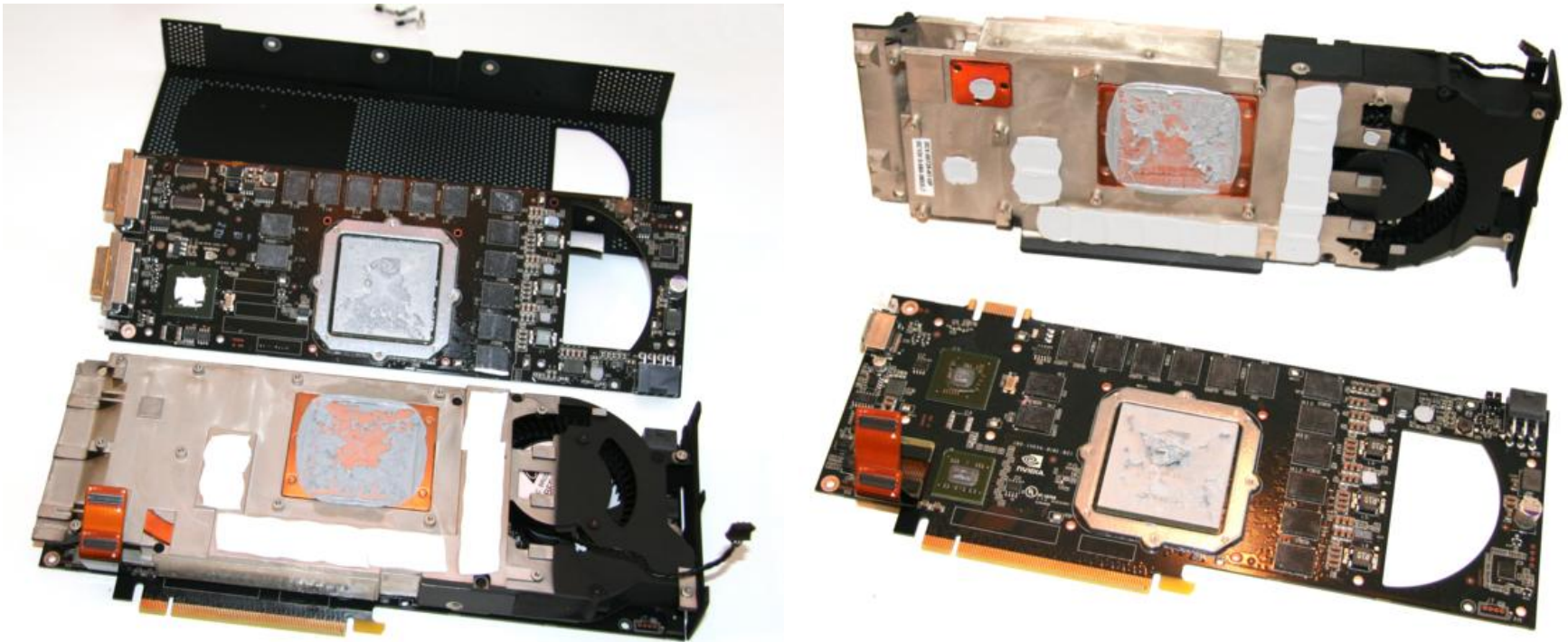
# GTX295 Video Card

Slide off the cover. Remove the additional (13) screws.  
And (2) screws that attach the Bracket to the PCB.



# GTX295 Video Card

Gently separate each PCB (card) from the fan assembly. Disconnect fan power plug.



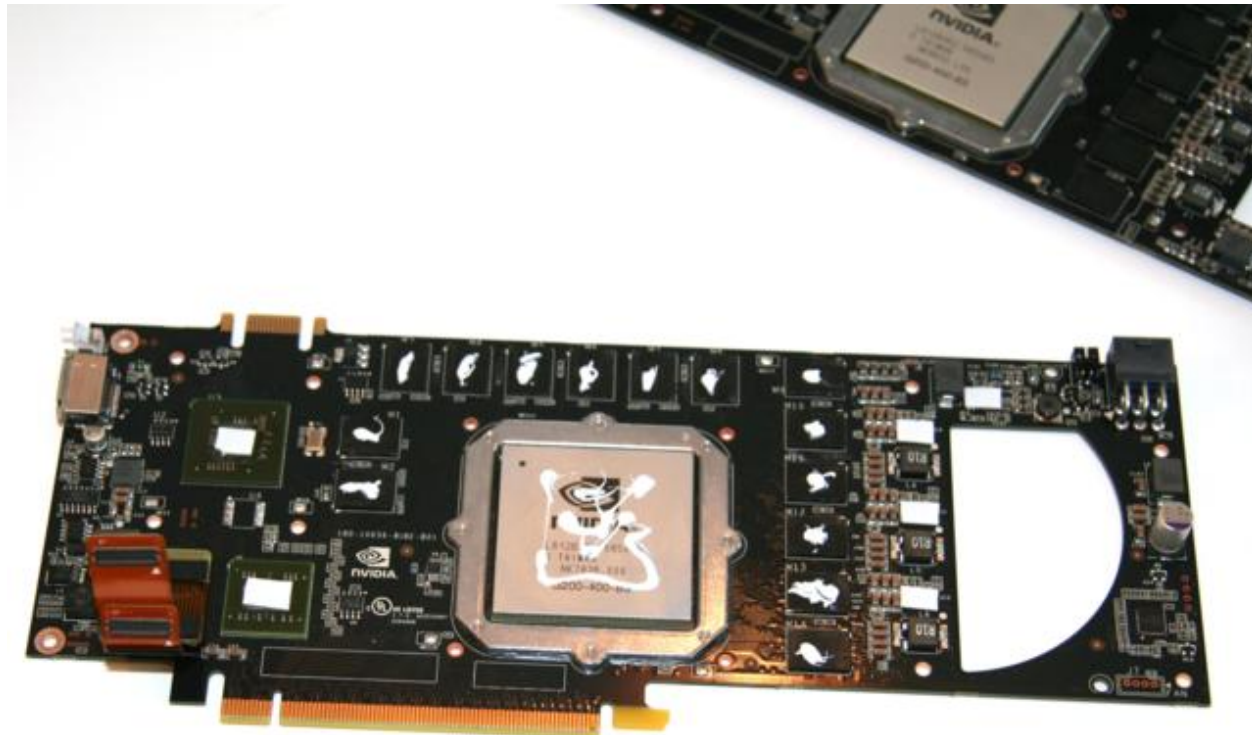
# GTX295 Video Card

Clean RAM, GPU, and all other contact points. Using Arctic Cleaner 1 & 2 will make this process quick and easy.



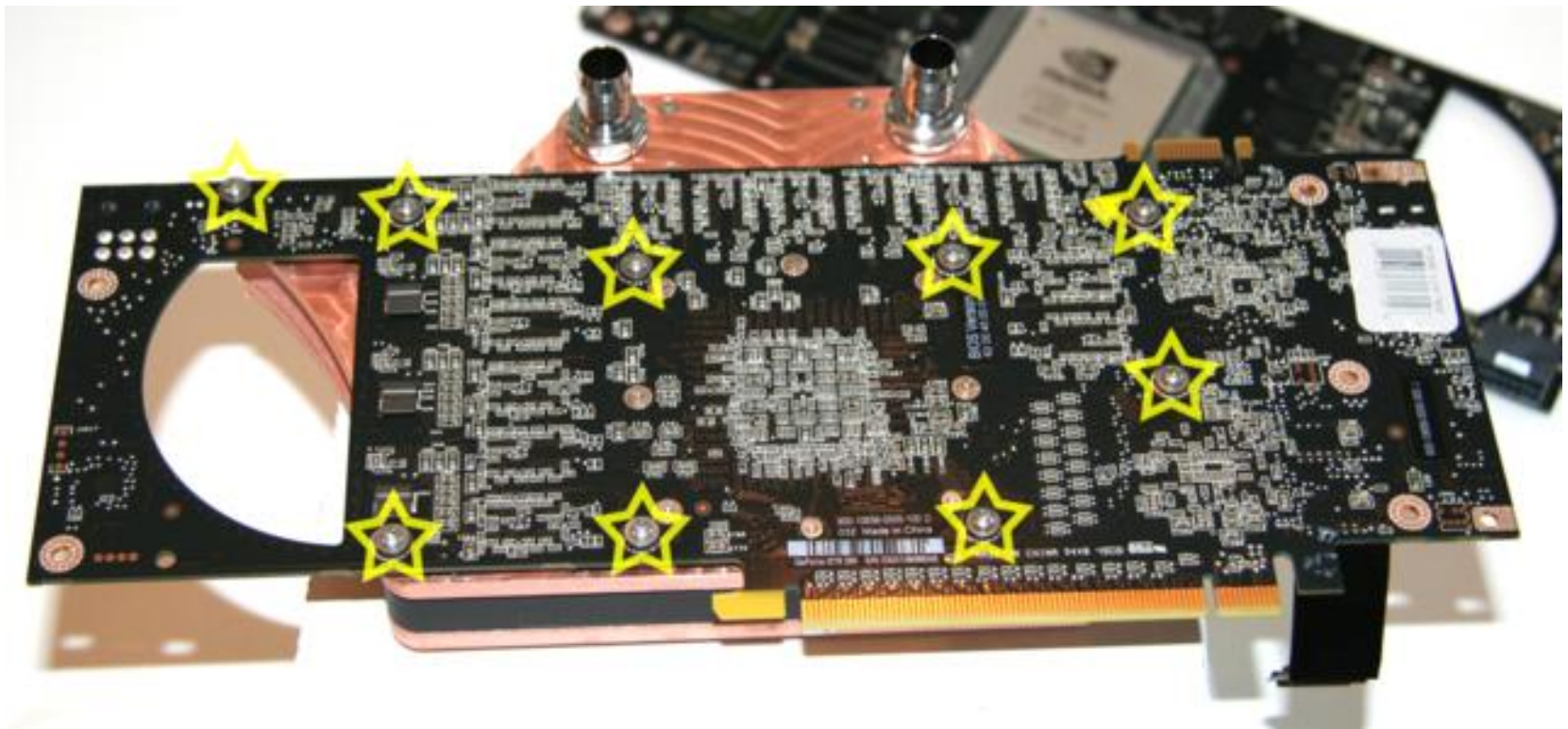
# GTX295 Video Card

The Master Card has an HDMI on the backplate. Place Ceramique on the RAM and GPU. Thermal tape on the two chips on the left and four spots on the right.



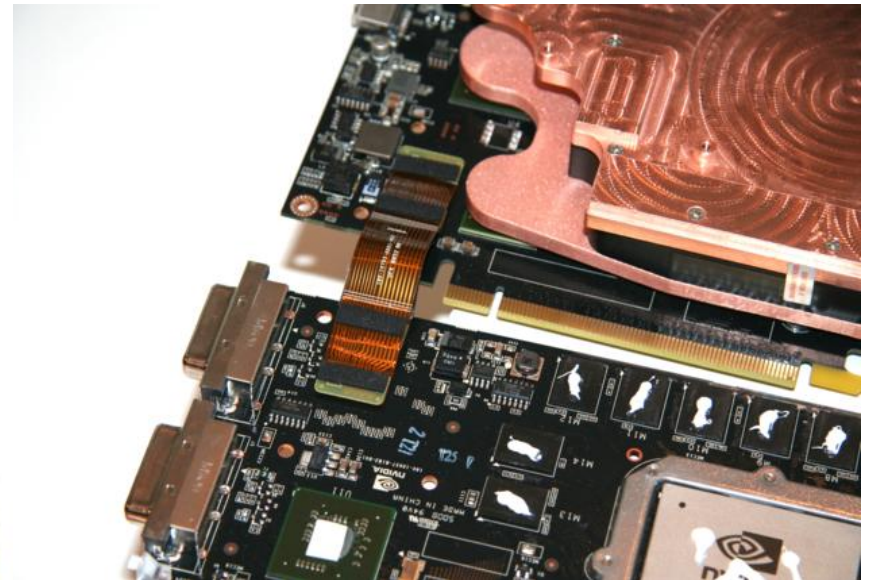
# GTX295 Video Card

Start all (9) screw assemblies (screw, washer, o-ring). Tighten down the four (4) around the GPU fully. Then proceed with remaining screws.



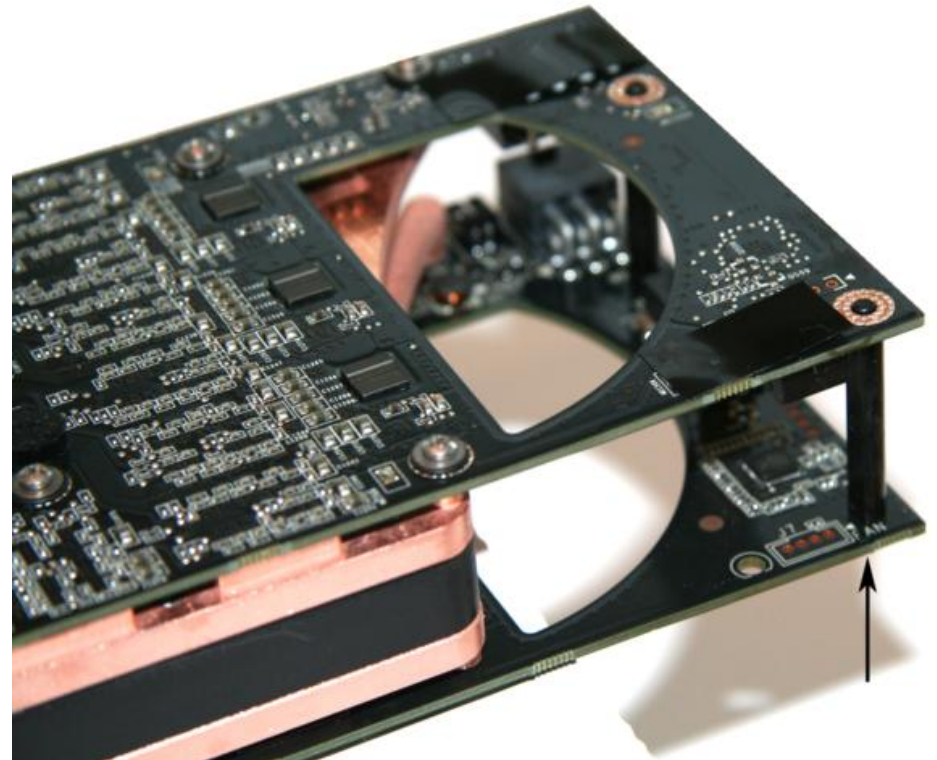
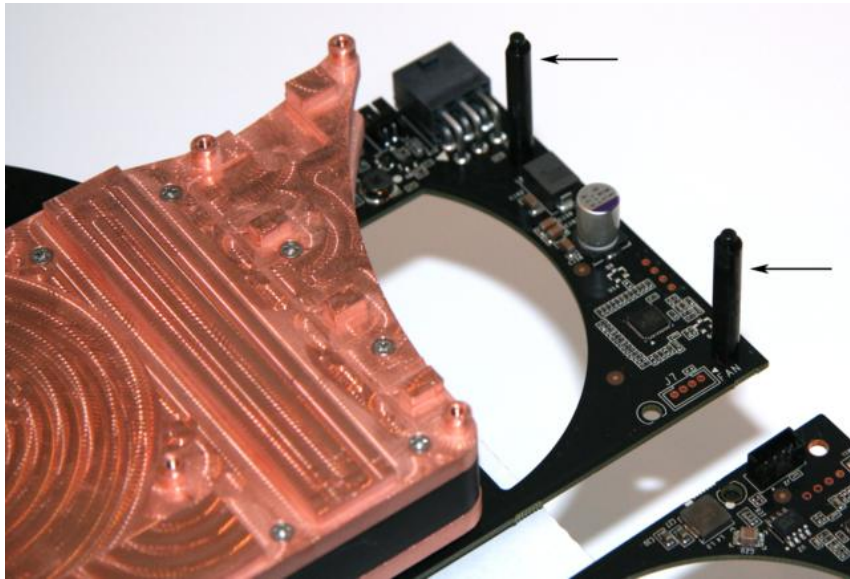
# GTX295 Video Card

On the slave card has two DVI ports. Place Ceramique on the RAM and GPU. Thermal Tape on the chip on the left and four spots on the right. Attach SLI bridge at all four locations.



# GTX295 Video Card

Install the two support posts at the end of the video card (these posts are part of the original Nvidia heat sink). Place the slave card over the block. Be sure to check the support posts and SLI bridge placement.



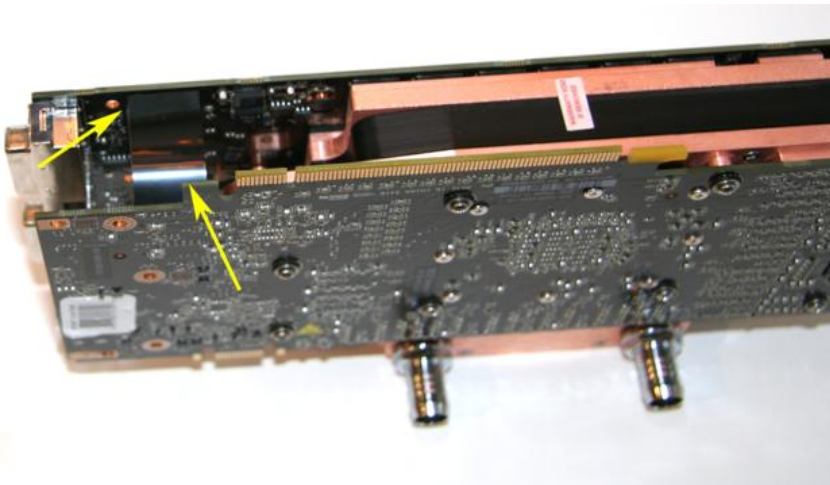
# GTX295 Video Card

Start all (9) screw assemblies (screw, washer, o-ring). Tighten down the four (4) around the GPU fully. Then proceed with remaining screws.



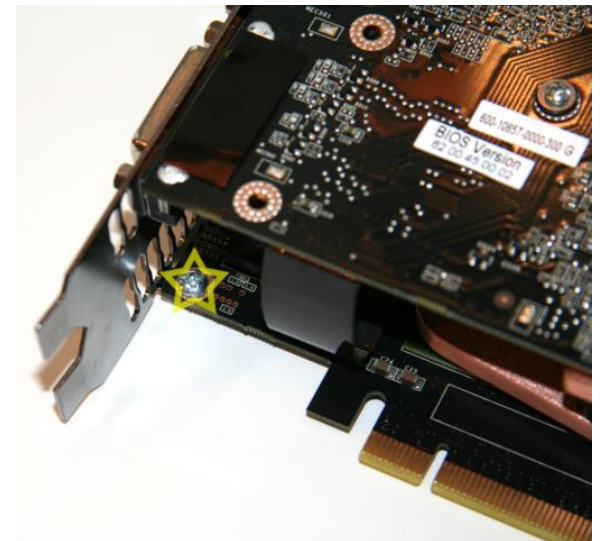
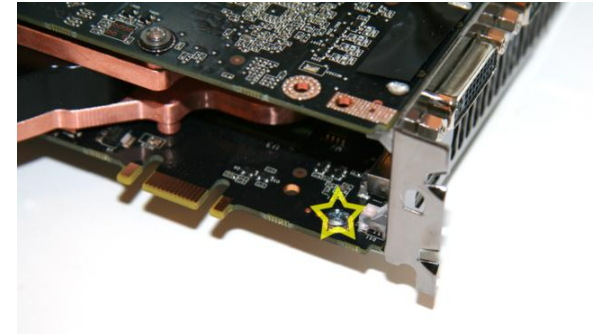
# GTX295 Video Card

Double check SLI bridge installation and the two support posts at the end of the card.



# GTX295 Video Card

Install the four DVI Support posts. Install the two screws for the Bracket and PCB connection



# GTX295 Video Card

Installation is complete! Please leak test the entire system for 24 hours before applying power. Optional installation of the Nvidia plate is shown on the video card below.

